



Bartlams

22 Eaves Court Drive, Dudley, DY3 3QZ

£250,000

Presenting a fabulous opportunity to acquire a three bedroom semi-detached home positioned in a highly sought after residential area situated off Northway, providing plenty of local amenities and transport links nearby. Upon entry to this spectacular home you are greeted by a spacious hallway that provides access to the kitchen, open lounge diner, staircase to the first floor and some handy under stair storage. Up to the first floor and you will immediately be presented with a spacious landing area leading to the three bedrooms and family bathroom. The exterior of this home provides all you could need, with a private driveway offering parking for multiple vehicles, side access to the rear garden and a garage for useful storage setback from the front of the property. To the rear is a large and private garden accessed via the sliding doors in the lounge diner or gated side access, the garden boasts lawn and decking areas making a great space for entertaining whilst also being easily maintainable. Book in a viewing with our local team to truly appreciate this spectacular home! We are advised by our client that this property is; Freehold, Council Tax Band - C, EPC - D.

- IDEAL FIRST TIME PURCHASE.
- THREE WELL PROPORTIIONED BEDROOMS.
 - MOVE IN READY.
- PRIVATE OFF ROAD PARKING.
 - GARAGE.
- PUBLIC TRANSPORT LINKS NEARBY.

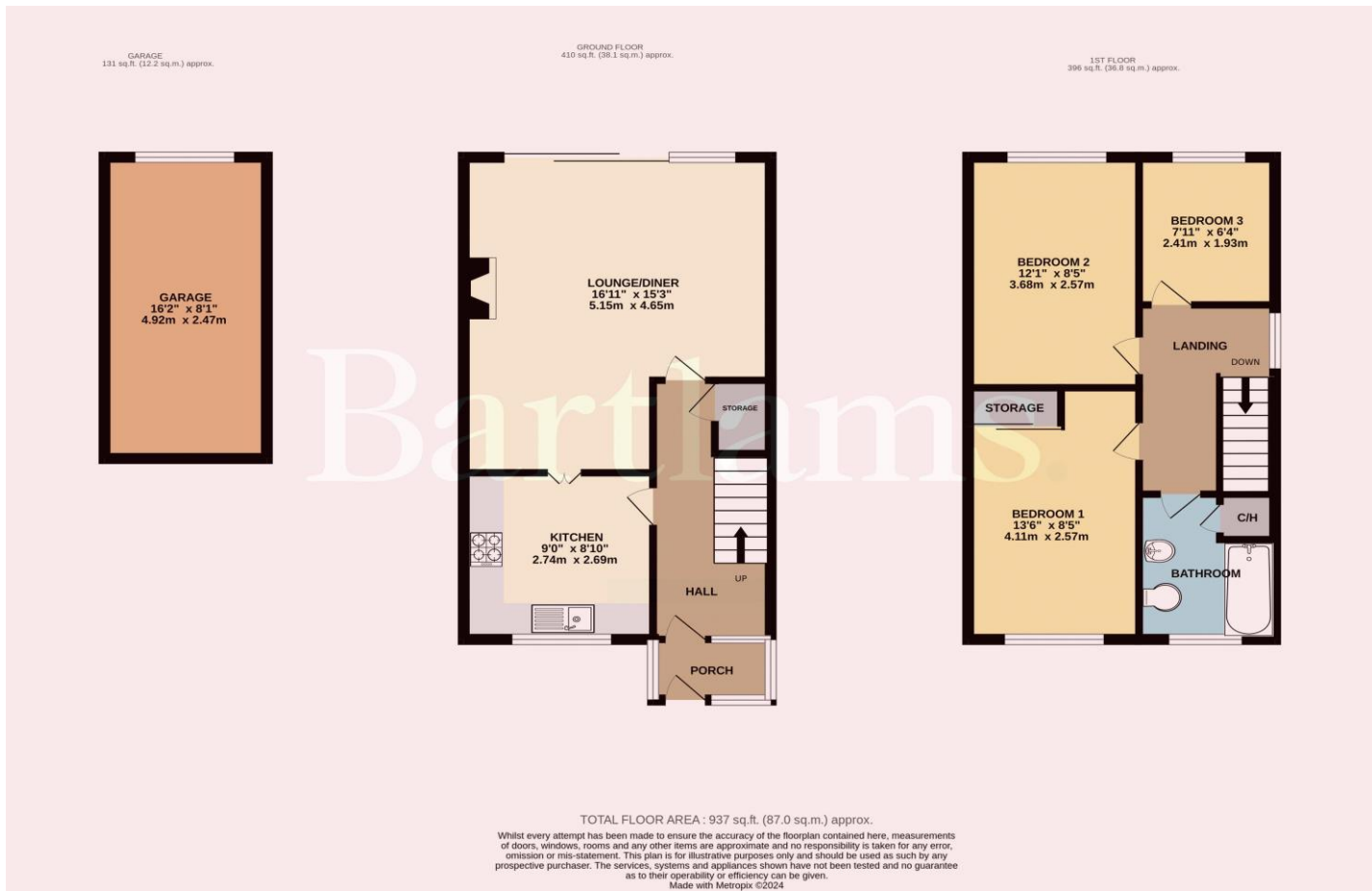


Freehold
COUNCIL TAX BAND - C
EPC RATING - D

NOTICE: These particulars, although believed to be correct, do not constitute any part of an offer or contract. All statements contained in these particulars as to this property are made without responsibility and are not to be relied upon as statements or representations of warranty whatsoever in relation to property. Any intending purchaser must satisfy themselves by inspection or otherwise as to the correctness each of the statements contained in these particulars. All measurements are approximate and for illustrative purposes only. Photographs are produced for general information and it must not be inferred that any item shown is included in the sale.

DISCLOSURE: As a professional Estate Agency our clients employ us to look after their best interests. This includes providing them with full details of offers made to purchase their property. To ensure our obligations to our clients are met we need to check the status of all potential purchasers. If you make an offer on this property we will ask a member of The Finance Family to contact you to verify your status. They are a leading firm of Independent Financial Advisers and Mortgage Brokers. Should they transact any business resulting from our introduction then we may receive a commission.

Bartlams



PLEASE SIGN BELOW TO AGREE THAT THE DETAILS ARE ACCURATE TO THE BEST OF YOUR KNOWLEDGE

SIGNED:

DATE:

House on the Green High Street Wombourne Wolverhampton Staffordshire WV5 9DP

01902 894141

wombournesales@bartlams.co.uk

www.bartlams.co.uk



